

*Providing services that
promote personal dignity
and independence
for individuals with
developmental disabilities,
acquired brain injury
and traumatic brain injury.*

Mission Statement

LifeStream, Inc. provides community-based services throughout Southeastern Massachusetts that promote personal dignity, independence and the removal of barriers through the provision of individualized support and education.

Guiding Principles

Those we serve have access to quality resources and opportunities to develop their potential and achieve their dreams. Therefore, we actively oppose prejudice and intolerance, celebrating the value in all people regardless of their abilities, appearance or beliefs. LifeStream strives to contribute to each neighborhood where we reside. Furthermore, we work diligently to be a fair, thoughtful and supportive employer. Also, LifeStream maximizes public and private resources, maintaining its commitment to quality services.

444 Myrtle Street
New Bedford, MA 02746
508-993-1991

13 Welby Road
New Bedford, MA 02745
508-985-9680

1 Father DeValles Boulevard, Suite 311
Fall River, MA 02723
508-674-1539

Mailing Address:

P.O. Box 50487, New Bedford, MA 02745
www.lifestreaminc.com



*LifeStream is accredited by the Commission on Accreditation of
Rehabilitation Facilities (CARF), and licensed by the MA Department of
Developmental Services and the Commonwealth of Education.
Funded in part by the Massachusetts Department of Transitional Assistance.*

Residential Services



Overview

LifeStream, Inc. was founded in 1976 by a group of concerned parents seeking better care for their adult children with developmental disabilities.

LifeStream has grown to become one of the premier non-profit human service organizations in southeastern Massachusetts. Accordingly, our programs and services have also expanded to meet the broader needs of individuals with disabilities, as well as their families.

Despite our growth, we are still committed to the early vision of those parents who fought so hard to enrich the lives of their children.

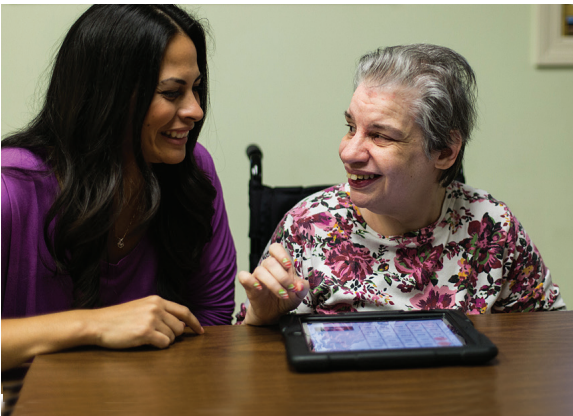
Residential Programs

LifeStream's residential options include the following:

Community Residences

We operate 30 group residences throughout southeastern Massachusetts for individuals with developmental disabilities, acquired brain injury and traumatic brain injury. People receive the support and attention required to lead an independent, well adjusted, and full life, and they actively participate in all areas of their daily lives.

Homes for those with greater needs are also staffed by a team of Licensed Practical Nurses (LPNs) and Certified Nursing Aides (CNAs). Additional medical, psychological, and therapeutic resources are available through our Clinical Services Department.



Each home offers 24-hour support and supervision, along with the following services:

- Individualized, needs-based programs
- Integrated clinical services in everyday living activities
- Nursing care and certified staff providing medication administration and management
- Medical, physical and cognitive assistance
- Appointment scheduling, oversight and transportation
- Community integration and social activities
- Ongoing needs analysis

Shared Living

This is a residential option for those who cannot safely live alone and want the comfort of a home environment with dedicated caregivers. Through a highly personalized matching process, LifeStream ensures that caregivers have the skills needed to support the person's needs. For many, this is the beginning of a long, and mutually rewarding relationship. In some instances, individuals may be able to remain at home with their family members who become the designated caregivers.

Independent Living

This program provides customized services to those living on their own or with family members, but who need additional assistance with everyday tasks. The participants and families serviced through this program direct the supports they need.

Services include:

- Skills needed to increase independence
- Personal advocacy training
- Money management
- On-call support
- Transportation
- Support at community and social events
- ADL assistance
- Assistance performing household chores
- Support with applying for and maintaining entitlements and public benefits
- Parenting skills
- Environmental safety
- Medical care coordination and support
- Assistance for parents and family members securing and maintaining available community resources
- Ongoing needs analysis to adapt to changing physical, cognitive, residential and medical needs



Learn more

For additional information on our residential programs and services, please contact Doug Hughes, Clinical Director, at dhughes@lifestreaminc.com.

For more information about our Shared Living and Independent Living programs, contact Lori Kydd, Senior Director, Disabilities Services at lkydd@lifestreaminc.com.

To learn more about LifeStream, visit our website at www.lifestreaminc.com.